

PROFESSIONAL IRRIGATION SYSTEMS



Greenman Pump Station plays the most important part for the entire irrigation system at Golf Courses. Greenman Pump Station promises easy and efficiency operation and reliable and low cost of service.

- UL Listed as a complete Packaged Pump Station;
- Support three interface: Chinese/English/Spanish;
- Control and monitor from any web-enabled device;



Silent wafer check Valves



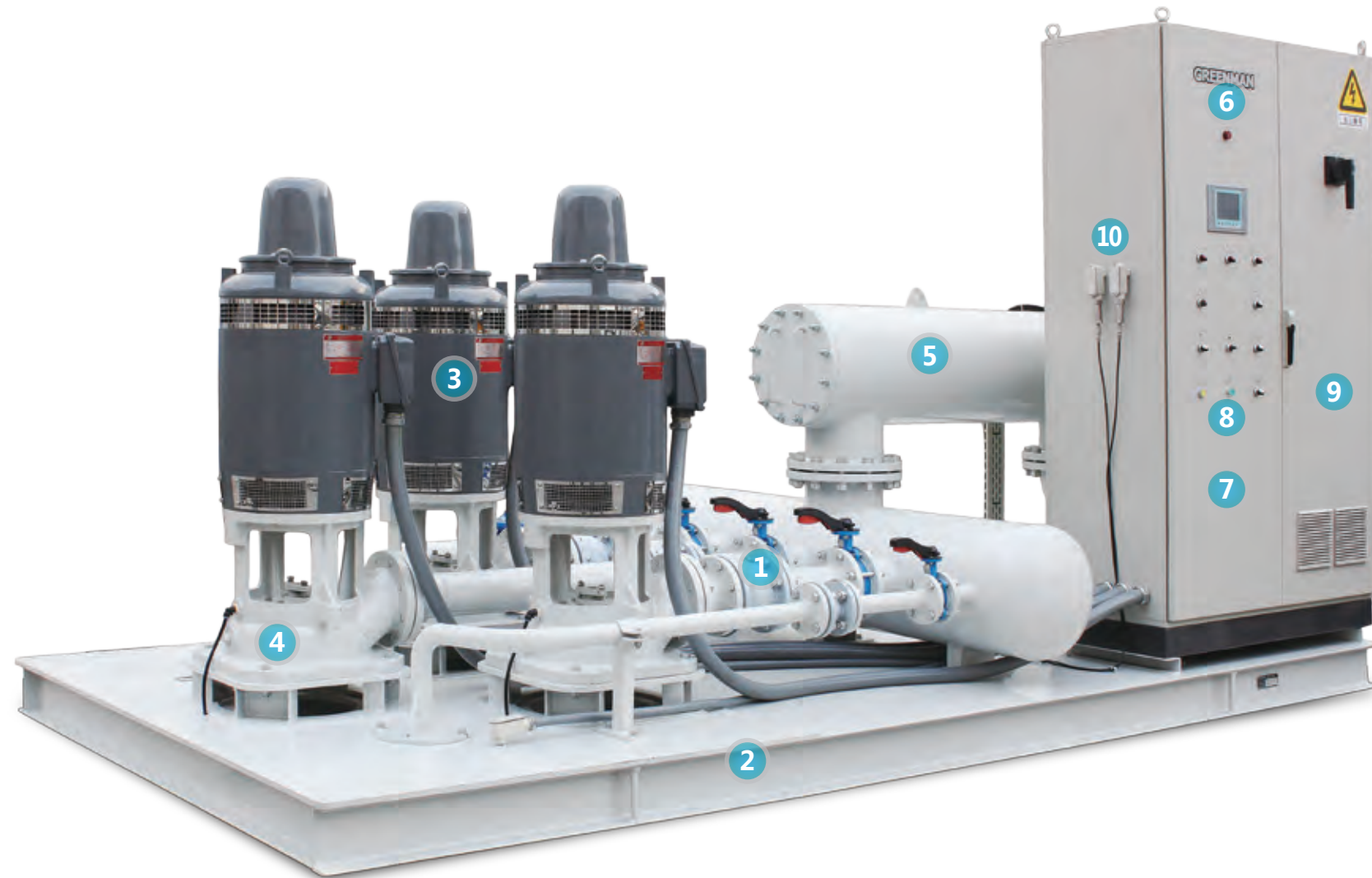
Enough space between pumps for easy maintenance



UL listed vertical hollow shaft motors



Separate plate of each Pump to keep the vertical condition of Pump



Each piping is galvanized



Dual transducer



SIEMENS or ABB VFD



SIEMENS Programmable Logic Controller



SIEMENS or AB Contactor and Overload Relay



Eaton or ABB Molded case circuit breakers



Superior Controls and Construction



Complete System Monitoring. Automatic shutdown in the event of low water level, over-flow, pressure overload, phase fault or imbalance, and VFD or filter system issues.

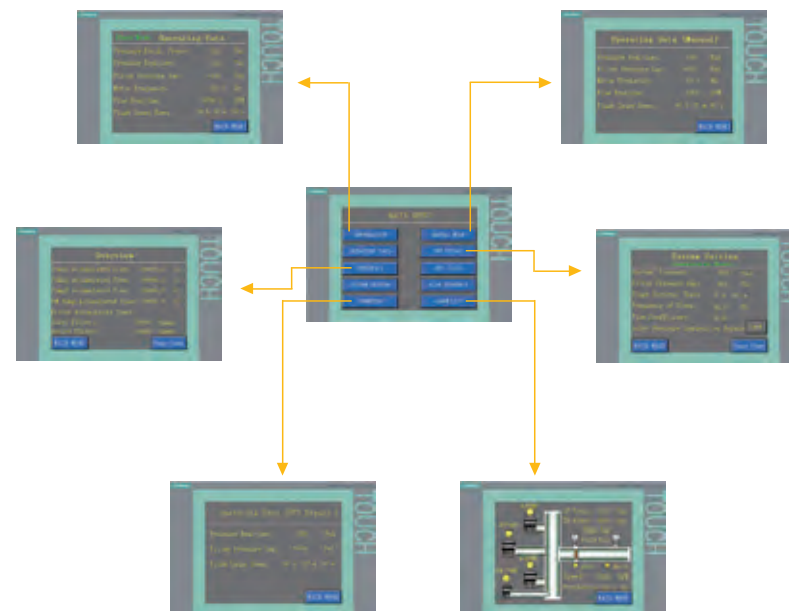
Effective VFD alternates pumping between motors to ensure more balanced performance and longer motor life.

Unique PLC algorithms to optimize the performance pump curve characteristics to avoid pressure surges in the systems.

Advanced turf irrigation management system is equipped with automatic and secondary manual modes to ensure continuous uninterrupted operation.

Proprietary Greenman software developed specifically for golf course irrigation, combined with Siemens S7-1200 PLC, and a clear touch screen provides easy access and operation.

Dual pressure sensors provides extra protection to ensure continual system operation.



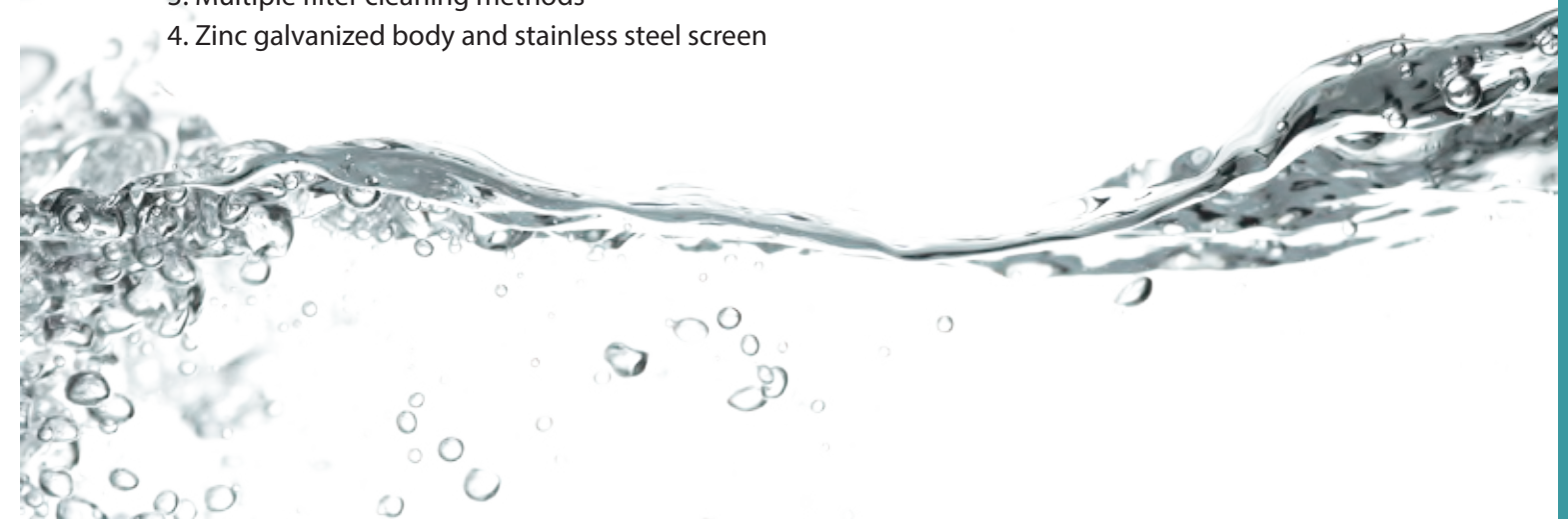
Integrated Filter System Monitoring

All Greenman pump stations feature an advanced filter system with both an automatic and manual flushing valve as well as dual pressure sensors to ensure consistent water flow. The filter operation is continually monitored by the PLC which can show status and performance issues.



Key Filter System Benefits:

1. Automatic back-flushing
2. Maintains consistent system pressure
3. Multiple filter cleaning methods
4. Zinc galvanized body and stainless steel screen





More Options For GREENMAN Pump Station



Optional injection system to supply fertilizers and pesticides with precision at adjustable rates.



PLC Retro Designed specifically for golf pump stations, it can significantly upgrade the entire control system. Siemens PLC with Smart Control software; bilingual interface (English and Spanish), 3-year warranty.

REMOTE MONITORING SYSTEM, Monitor the pump system anyplace and anytime. Operation log, auto back-up, and other functions are easily accessible with mobile devices.

Alerts & Reporting: System sends out notifications by email or text in real time.

Control System: Make system adjustments and change preferences instantly.

Maintenance Notifications: Operation logs can be sent to service providers.



Standard equipped Enclosure heat exchanger or air conditioner.



Optional equipped soft starter, Once VFD failure, system can switch to soft starter automatically in both Auto and Manual mode.

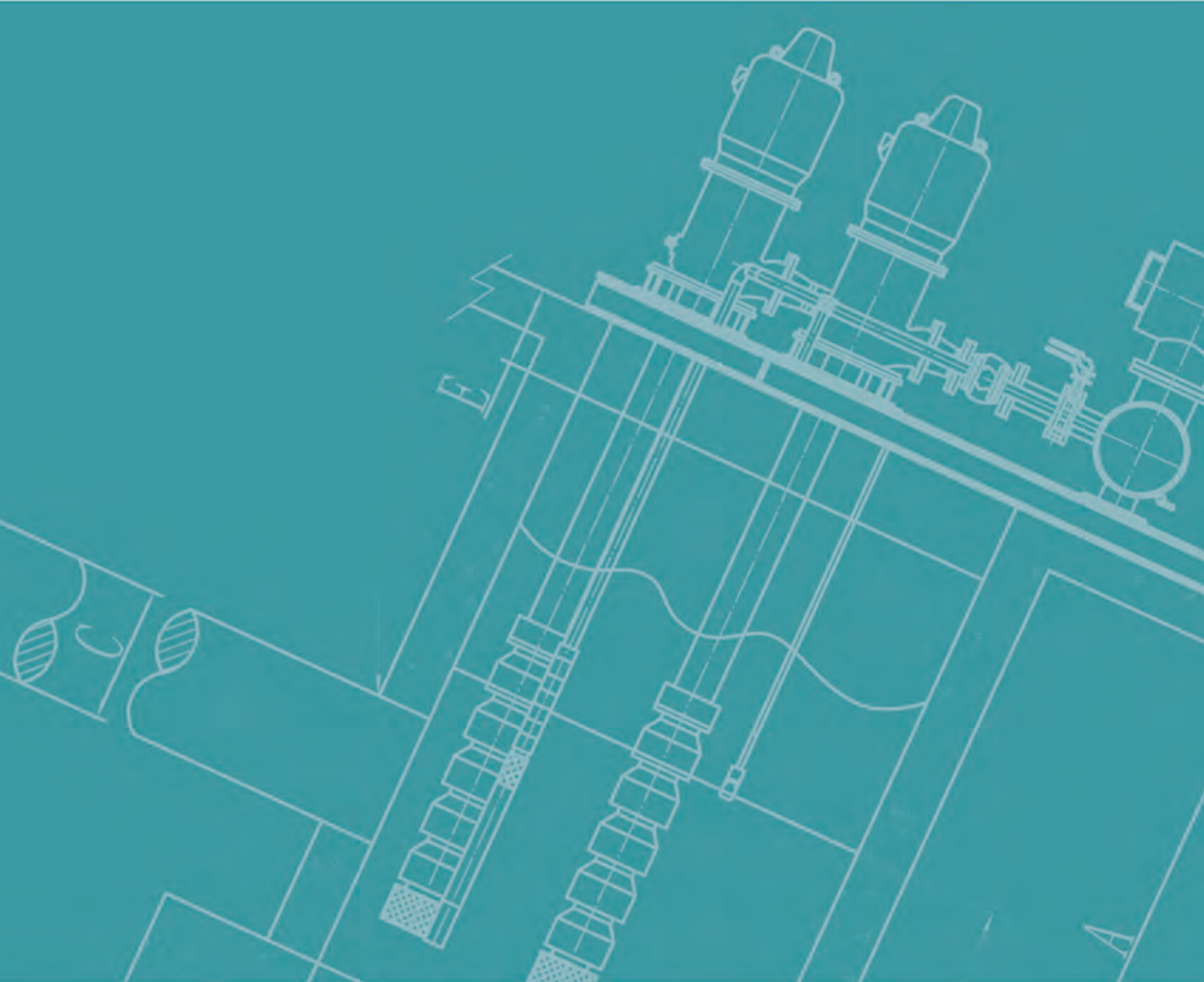


Greenman is dedicated to providing superior products with the highest quality components and workmanship. All key exterior surfaces include anti-corrosion coating for extended protection. We guarantee the quality standards on every one of our products.



All pump stations undergo comprehensive tests at full capacity at our production facility. The process fine-tunes the pump station operation, reduces setup time, and guarantees optimum performance.

Due to the custom specifications and configurations provided to meet specific irrigation requirements, actual final products may vary from images shown. More information is available from Greenman Irrigation Corporation.



Greenman Irrigation Corporation

8 Hammond, Suite 101
Irvine, CA 92618
(800) 819-5028